



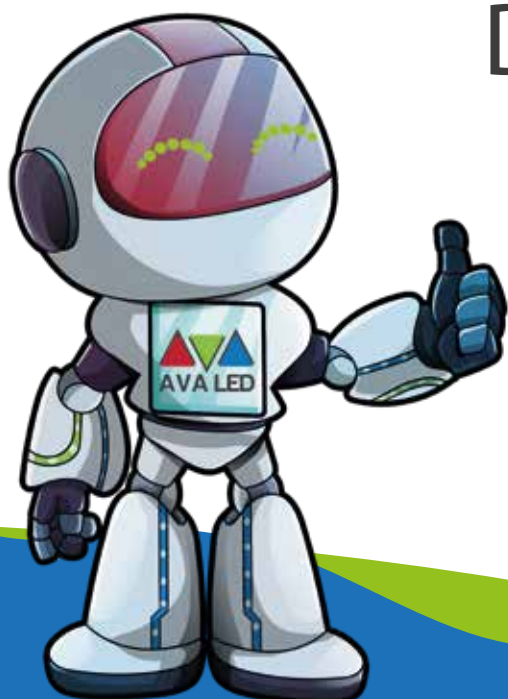
AVA LED

TN-PRO-IF-1

P1,86 PLUS

Data Sheet

QUALITY IN DETAIL



INDOOR FRONT SERVICE SERIES

TN-PRO-IF-1 "P1,86" PRO | TN-PRO-IF-1 "P1,86" PLUS





TITLE OF CONTENTS

- 02-04 ○ Features
- 05 ○ Technical Specification
- 06 - 08 ○ Cabinet Size - Photo
- 09 - 10 ○ Safety - Instalation
- 11 - 12 ○ Vision
- 13 ○ Company Info

- Advanced Contrast Brightness Black technology,
- Advanced High Refresh Rate,
- Fast installation of panel to Light Frame,
- Just Signal person to install/uninstall, saving labor cost
- Die-Casting Aluminum-Magnesium frame design, fanless design.
- No noise, lower power consumption, good heat dissipation.

TK-PRO-IP 1 PRO "P1,86"

- High Refresh Rate: 3840Hz
- B Class Led Chip
- High Quality PCB
- High Quality MASK
- Rotation 90 Degree

TK-PRO-IP 1 PLUS "P1,86"

- High Refresh Rate: 3840Hz
- A Class Led Chip
- Best Quality PCB
- Best Quality MASK
- High end Refresh Rate
- 18 Bit
- Clear View
- Free Rotation
- HDR
- 4K Refresh Rate



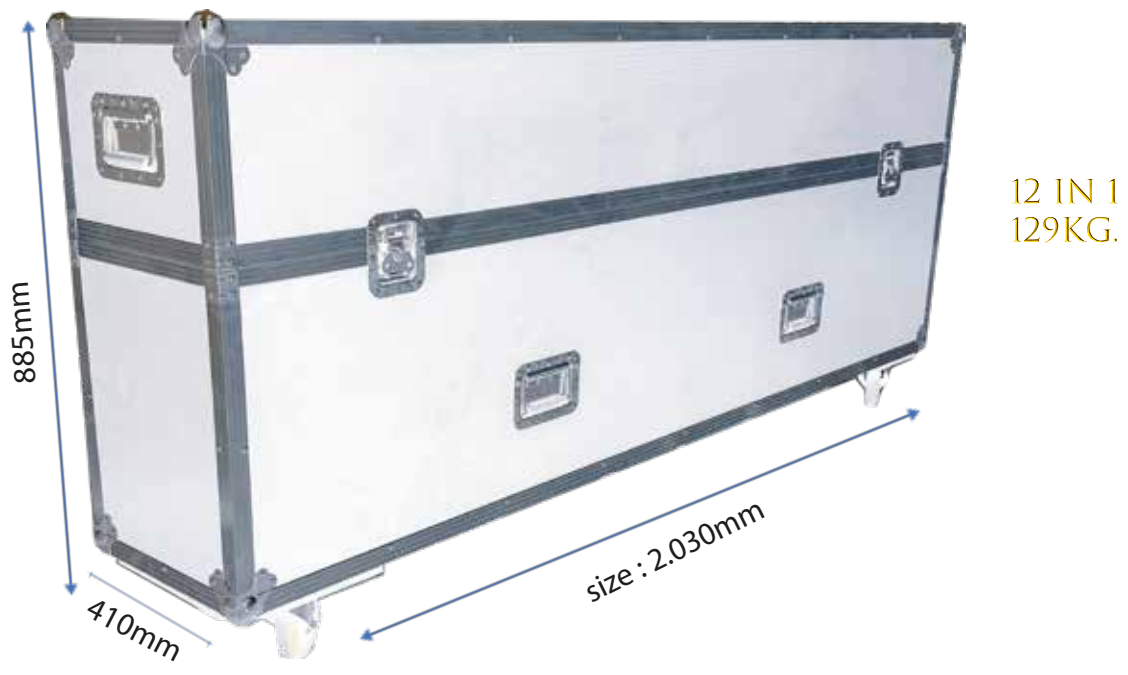
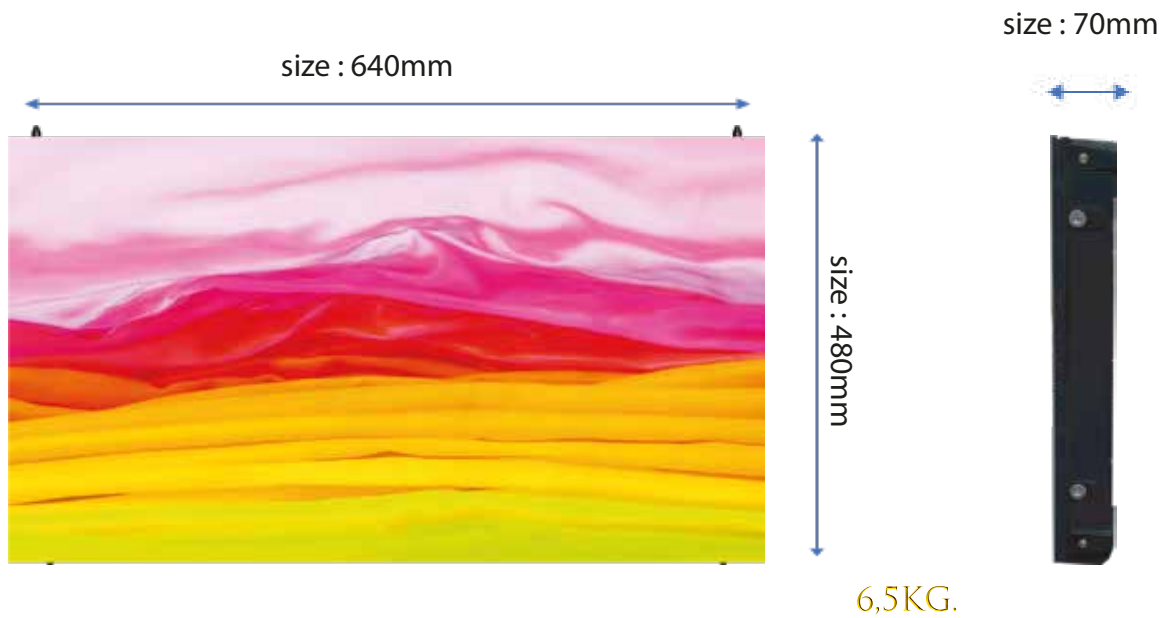
Features

- *** FRONT SERVICE
- *** Light Weight
- *** Magnesium Die-Casting
- *** 3 in 1 Case weight with products: 129kg.
- *** Faster Cooling
- *** Advenced and safety Lock
- *** Nova Star Controller
- *** SPACE BLACK

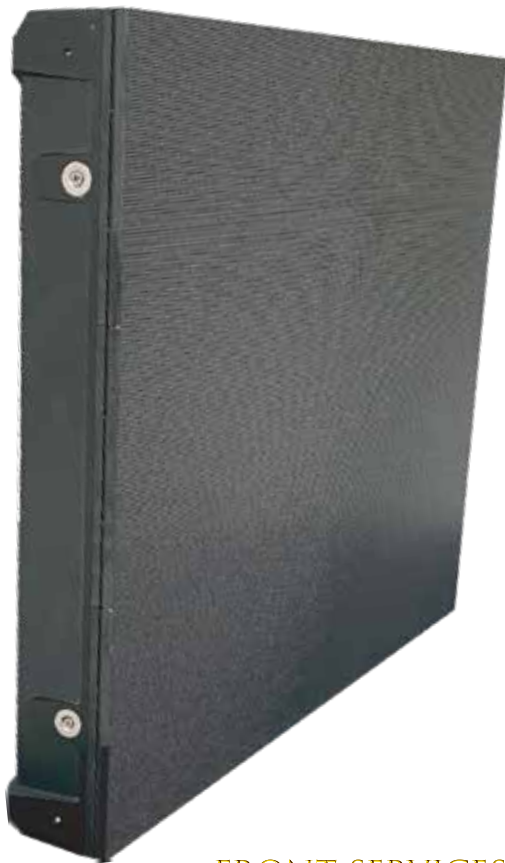
| MODEL NAME Version | TN-PRO-IF 1 PRO "P1,86" | TN-PRO-IF 1 PLUS "P1,86" |
|------------------------------------|--|--|
| Pixel Pitch | 1,86mm | 1,86mm |
| Pixel Configuration | SMD 1515 | SMD 1515 |
| LED | Space Black | Space Black |
| Processing | 16 Bit | - |
| Processing | - | 18 Bit |
| Pixel Density / m2 | 289444 | 289444 |
| Resolution/SQM | 538 x 538 | 538 x 538 |
| Cabinet Resolution 640x480 | 344 x 258 | 344 x 258 |
| Pixel Density / Cabinet | 88753 | 88753 |
| Module Size (mm) | 320x160 | 320x160 |
| Cabinet Size (mm) | 640 x 480 x 70 | 640 x 480 x 70 |
| Module Per Cabinet | 6 MODULE | 6 MODULE |
| Module Resolution | 172 x 86 | 172 x 86 |
| Weight Per Panel Net kg. 640x480mm | 6,5 | 6,5 |
| Rotation per 90 Degree | ✓ | ✓ |
| Free Rotation (with R5) | ○ | ✓ |
| Mapping | ✓ | ✓ |
| Clear View | ○ | ✓ |
| Low Latency | ○ | ✓ |
| HDR | ○ | ✓ |
| Power Consumption (<w/sqm) | 550 | 530 |
| Average Power Consumption (<w/sqm) | 165 | 159 |
| Driving Method | 1/29 | 1/29 |
| Brightness | >800 Nits | >800 Nits |
| Refresh Rate | - | - |
| Refresh Rate High Refresh | >3840Hz | >3840Hz |
| Refresh Quality | High Quality | Best Quality |
| High Refresh (PLL inside) | - | ✓ |
| High Refresh Power Saving | ✓ | ✓ |
| High Refresh Dynamic Power Saving | - | ✓ |
| Driving IC Type | PWM | PWM |
| Refrate Quality 2 | 4K Refresh Rate | 4K Refresh Rate |
| No Waterless Ripple of Camera | >%75 | >%90 |
| Cabinet Material | Die-Casting Aliminum | Die-Casting Aliminum |
| Horizontal Viewing Angle | 140 (±30) | 140 (±30) |
| Vertical Viewing Angle | 140 (±30) | 140 (±30) |
| Expected LED Lifetime %50 | 100,000 Hours | 100,000 Hours |
| IP Rating | IP20 | IP20 |
| PCB Quality | Best Quality | Best Quality |
| Module - Mask Quality | Best Quality | Best Quality |
| LED Chip | Class A | Class A |
| Picture / Video Quality | Best Quality | Best Quality |
| Grey Scale | 65536 | 262144 |
| Control Systems | Nova Star | Nova Star |
| Operating Temperature Range | -20 - +60 (±10) | -20 - +60 (±10) |
| Operating Humidity Range | -40°C~+60°C,10%-90%RH | -40°C~+60°C,10%-90%RH |
| Voltage Range | 200 ~240VAC | 200 ~240VAC |
| Packing include | Plate-Power-Cat5 Cable | Plate-Power-Cat5 Cable |
| Certificate | CE/EMC/LVD-ATR-EUR1 ISO-9001:2015 ISO-14001:2015 | CE/EMC/LVD-ATR-EUR1 ISO-9001:2015 ISO-14001:2015 |

The data written in the catalog may differ by + - 10%

CABINET SIZE



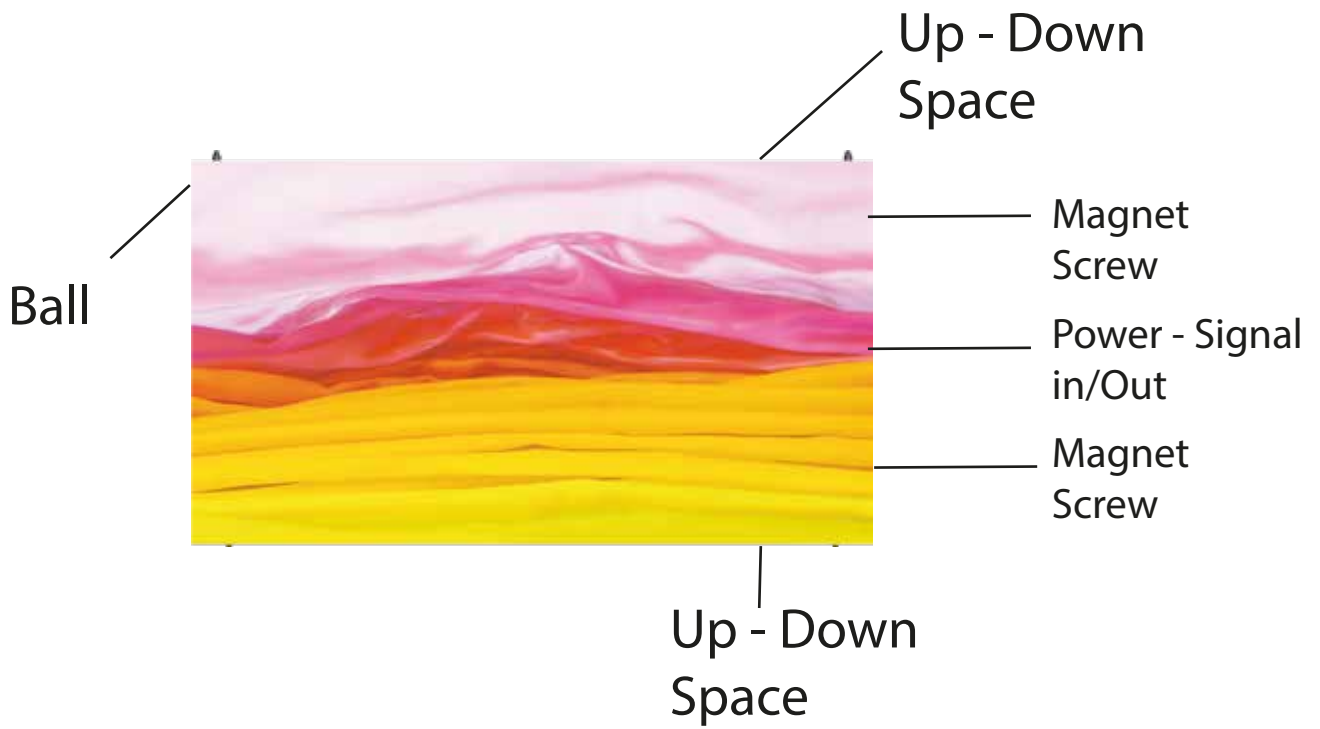
PRODUCT PHOTO



FRONT SERVICES



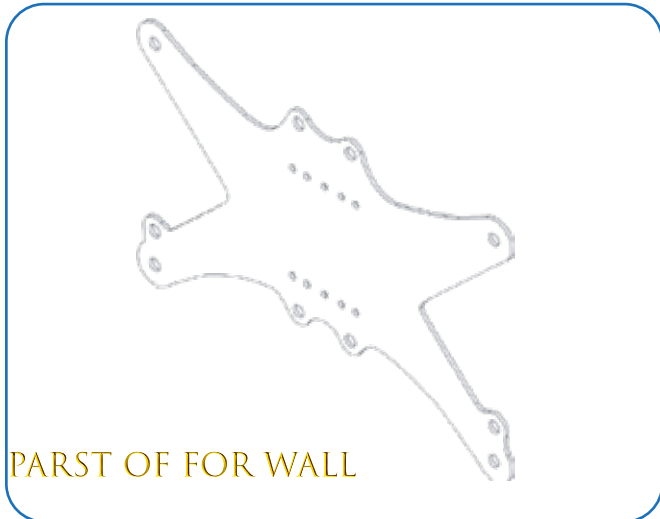
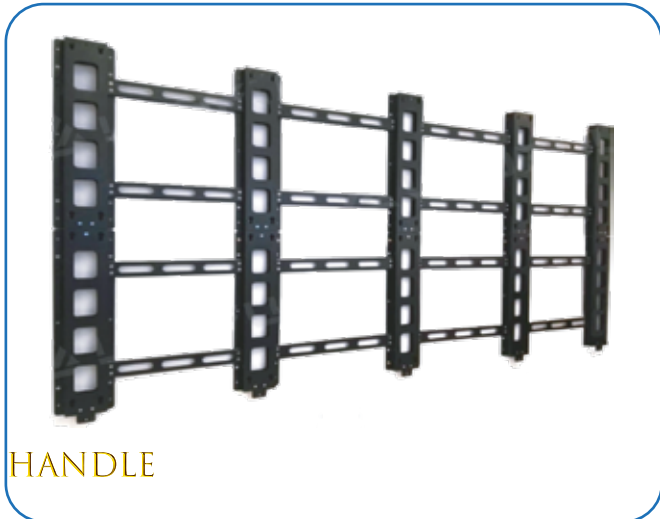
QUALITY IN DETAIL



Ultra High Definition

It delivers a truly amazing picture with extraordinary pixels producing an image that is HD quality in an LED Screen. ipsum





The support structure has to be provided and installed by the customer because they vary from project to project. The following issues must be considered:

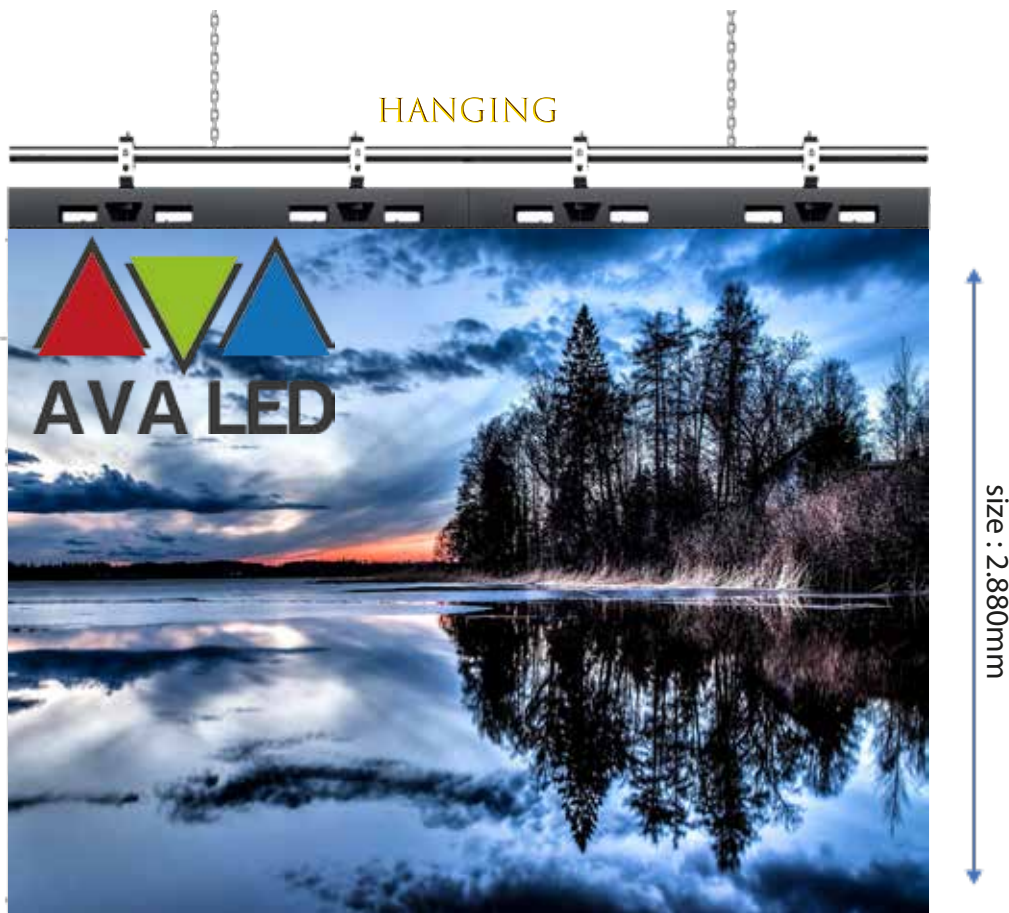
Weight tolerances: Ensure that the support structure and the floor on which or the wall against which the support structure has to be installed, is qualified to handle the complete weight of the LED display screen.(which can be provided by manufacturer.

Environmental conditions: Humidity, wind, temperatures, rain, snow etc.

Location: Outdoor/.Indoor, altitude, etc. Usually, for outdoor display screen, the customer should build top cover and side cover for IP protection (Including waterproof and dustproof)

Ground stability

Front clearances: For making sure there is sufficient free area in front of the LED display screen and respect the maximum viewing angles and distance. Local regulations regarding such installation.



size : 3.840mm

size : 2.880mm

ULTRA WIDE VIEWING ANGLE



Both 160° from horizontal & vertical for the viewing angle.
Seeing from five directions, it would be still the natural and clear image in an LED display.

ULTRA FAST RESPONSE



Perfect Rendering Dynamic Picture

Response speed



Smear Ghosting Phenomenon

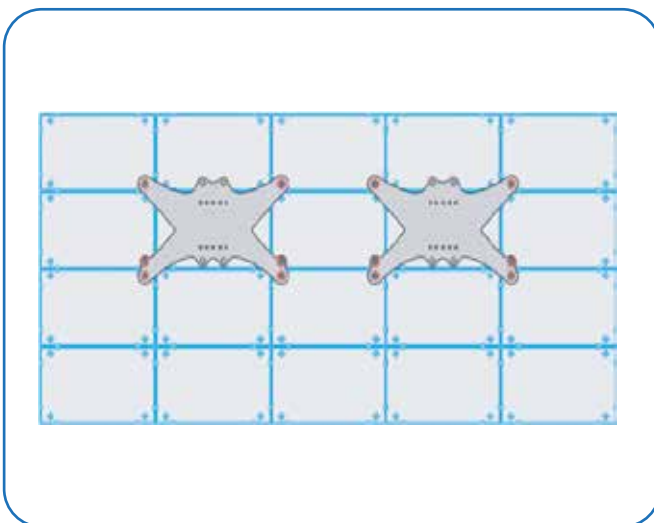
18 BIT GREY SCALE



AVA LED



Others



VISION



AVA LED

www.avaledscreen.com
info@avaledscreen.com

AVA GROUP GMBH

Adress: Goethestraße 7D - 40237 Düsseldorf / Germany

Phone : +49 211 730 64 817

